

# PRE-CRUSHER

**Exclusively designed** to be an integral part of the compactor • Not an add-on or after thought • Ideal for **pallet, drum crushing, product destruction**, and to achieve maximum density • Built to take the abuses of high compaction forces



127 N. Water St. Hopkins, MI 49328  
269-793-7183  
[www.sebrightproducts.com](http://www.sebrightproducts.com)



# PRE-CRUSHER

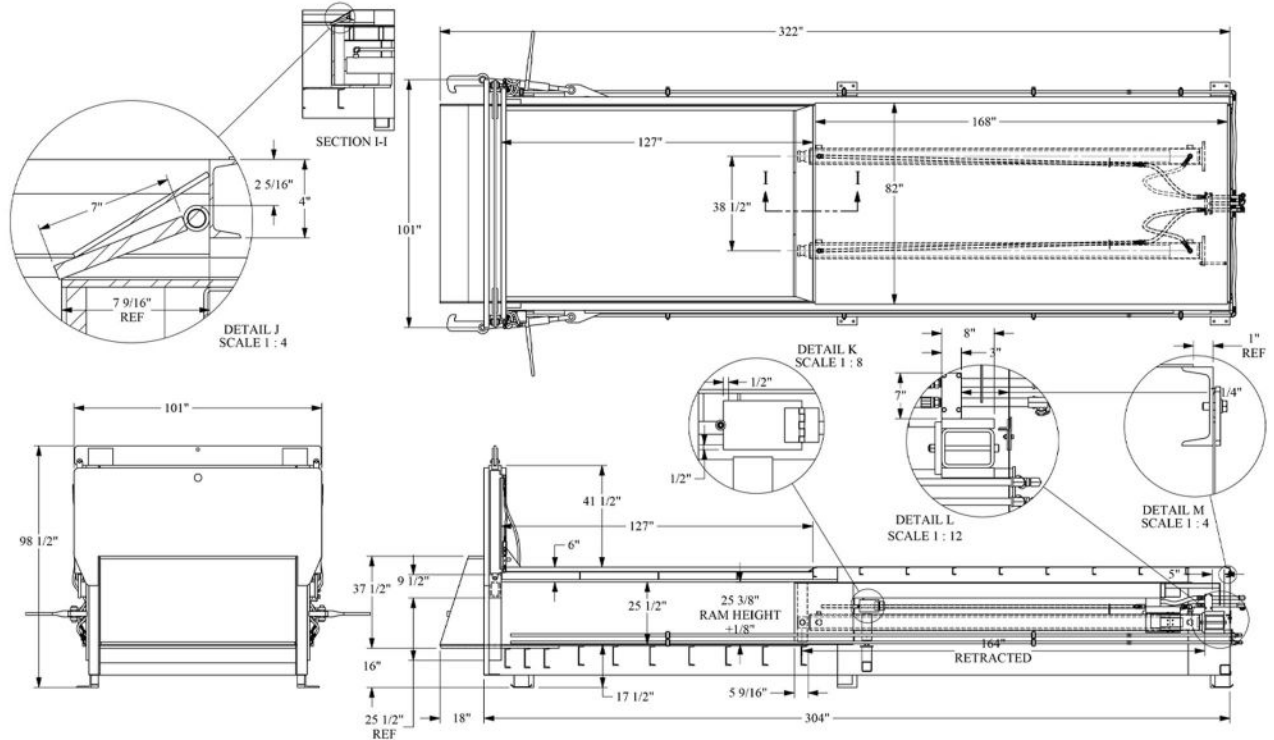
## Standard Features

- Long motor life – TEFC (Totally Enclosed Fan Cooled)
- 5" solid steel wall with 2" thick steel guide plates on each side
- Stress designed support system. All above the chamber eliminating material from wedging in the guide tracks
- PLC driven control panel
- Option to by-pass the Pre-Crusher
- Extra heavy-duty frame and ram – heavy structural plate with ship and car channel construction
- AR235 Alloy floor and sides
- Nylatron guide shoes; 3 shoes on each side
- Capable of crushing at one force setting and compacting at a different force setting



\* All dimensional data for reference only

\* Due to product improvement, the manufacturer reserves the right to alter, or amend, without notice, any of these specifications and dimensions.



Model	Motor HP	Pump GPM	Cylinder Size	Max PSI	Cylinder Force	Cycle Time	Cu. Yd. Hour	Weight (lbs.)
<b>5260PC-1-6</b>	20	30	(1) 6" X 68"	2,000	56,540	38	118	20,640
<b>5260PC-2-6</b>	30	43	(2) 6" X 68"	2,000	113,100	57	101	21,479
<b>7460PC-1-6</b>	20	30	(1) 6" X 92"	2,000	56,540	63	125	22,142
<b>7460PC-1-7HD</b>	20	30	(1) 7" X 92"	2,000	76,960	83	98	22,842
<b>7460PC-2-6</b>	30	43	(2) 6" X 92"	2,000	113,100	72	103	23,042
<b>9860PC-2-6</b>	30	43	(2) 6" X 116"	2,000	113,100	83	123	26,180
<b>12860PC-2-6</b>	30	20/43*	(2) 6" X 146"	2,000	113,100	80	130	29,425
<b>12880PC-2-6</b>	40	18/54*	(2) 6" X 146"	2,000	113,100	74	245	32,043

\*Hi-low Pump

While Sebright Products, Inc., strives to make the information provided on processing of your waste or recycling stream, as timely and accurate as possible, the company makes no claims, promises or guarantees about the accuracy, completeness, or adequacy of any of the provided information, and expressly disclaims liability of errors and omissions in the content of the information, or analysis provided to your company. It is solely the responsibility of each recipient of the information Sebright Products, Inc., has provided to satisfy itself as to the accuracy of the information provided by Sebright Products, Inc., and as to the efficacy of the product(s) for the use(s) intended.