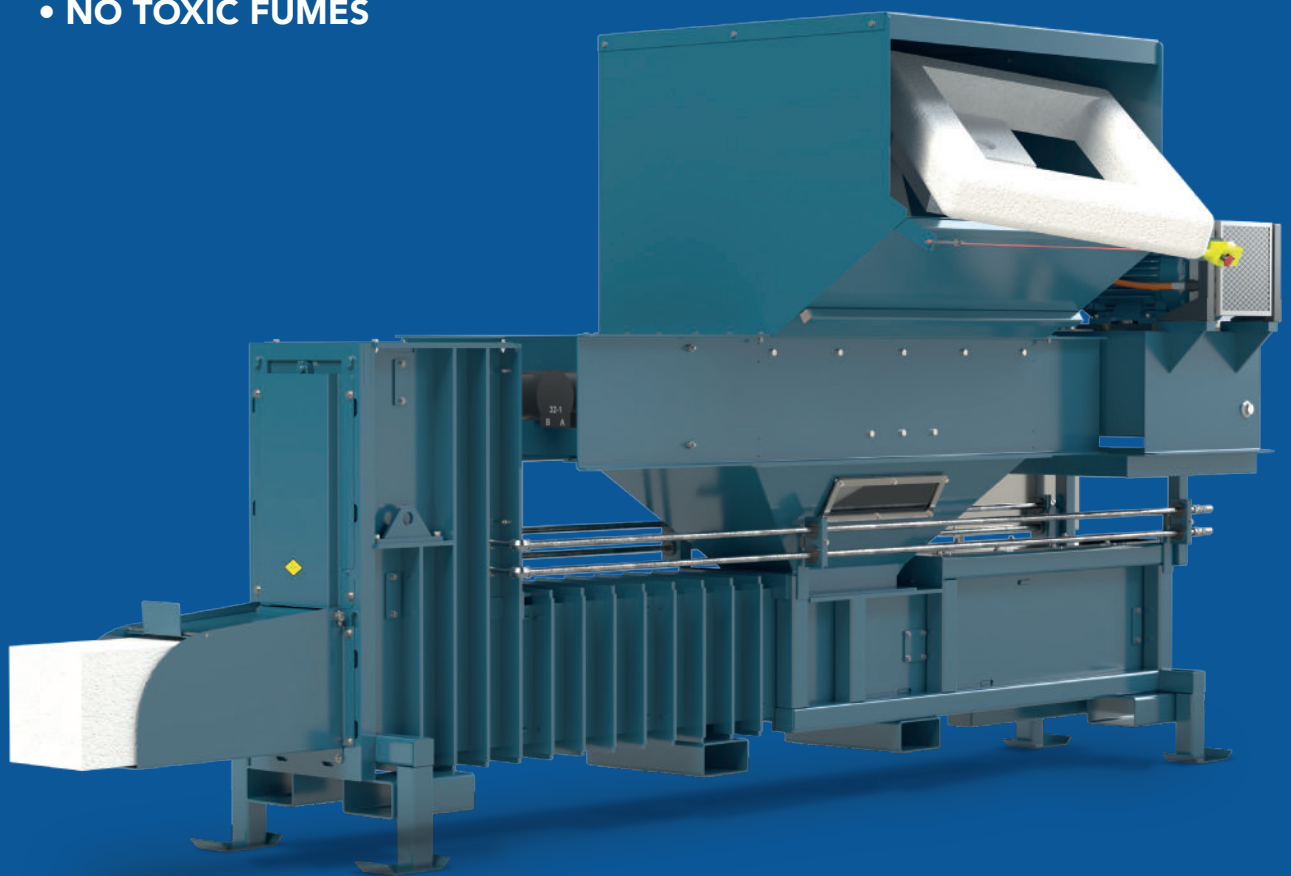


# EPS DENSIFIER

50:1 DENSIFICATION WITH

- NO HEAT
- NO DUST
- NO TOXIC FUMES



127 N. Water St. Hopkins, MI 49328  
800-253-0532  
[www.sebrightproducts.com](http://www.sebrightproducts.com)



# EPS Densifier

Revolutionize your EPS recycling process with our advanced compactors. Engineered with cutting-edge technology, our machines efficiently collect and compress EPS materials, maximizing storage space and reducing transportation costs. From bulky packaging to insulation waste, our compactors handle it all, converting EPS into reusable resources. With precision engineering and user-friendly operation, our equipment ensures minimal downtime and maximum output.

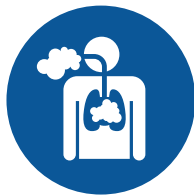
Experience innovation without the use of heat! Unlike traditional compactors, our cutting-edge design eliminates the need for heat generation during the EPS recycling process. This unique feature not only reduces energy consumption but also minimizes environmental impact. No heat means no fumes in the process and no jamming of the EPS in the compactor, as you would see in auger operated equipment, ensuring a safer and smoother recycling operation.

By opting for our heat-free compactors, you're choosing a sustainable solution that prioritizes efficiency and eco-friendliness. Join the forefront of sustainable practices and unlock the full potential of EPS recycling with our industry-leading compactors. **Transform waste into Return On Investment today.**

## Features & Benefits



No heat generated



No toxic fumes



Integral dust collection port



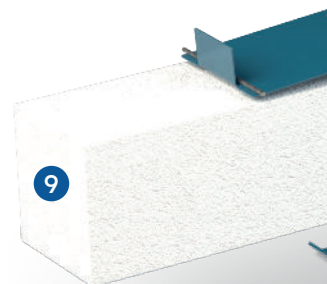
Sealed design/  
clean operation



Low energy requirements

## EPS Densifier, How It Works

- 1 Product enters the hopper
- 2 Sensor detects material, sends info to main control, ram moves forward
- 3 EPS is broken into small pieces
- 4 Press plate moves forward, compacting material in compression channel
- 5 EPS will be compacted to a dense block without friction, no heat is generated
- 6 Compressed EPS moves forward and will act as a plug when the machine takes a new load of material
- 7 Material clamp will make sure the machine holds the material when it needs to stay in and releases it when a new load has been fed
- 8 The length of the blocks is adjustable, the block breaker breaks the block on the desired length
- 9 Compressed material will be pushed out of the machine and can be further processed



Application examples



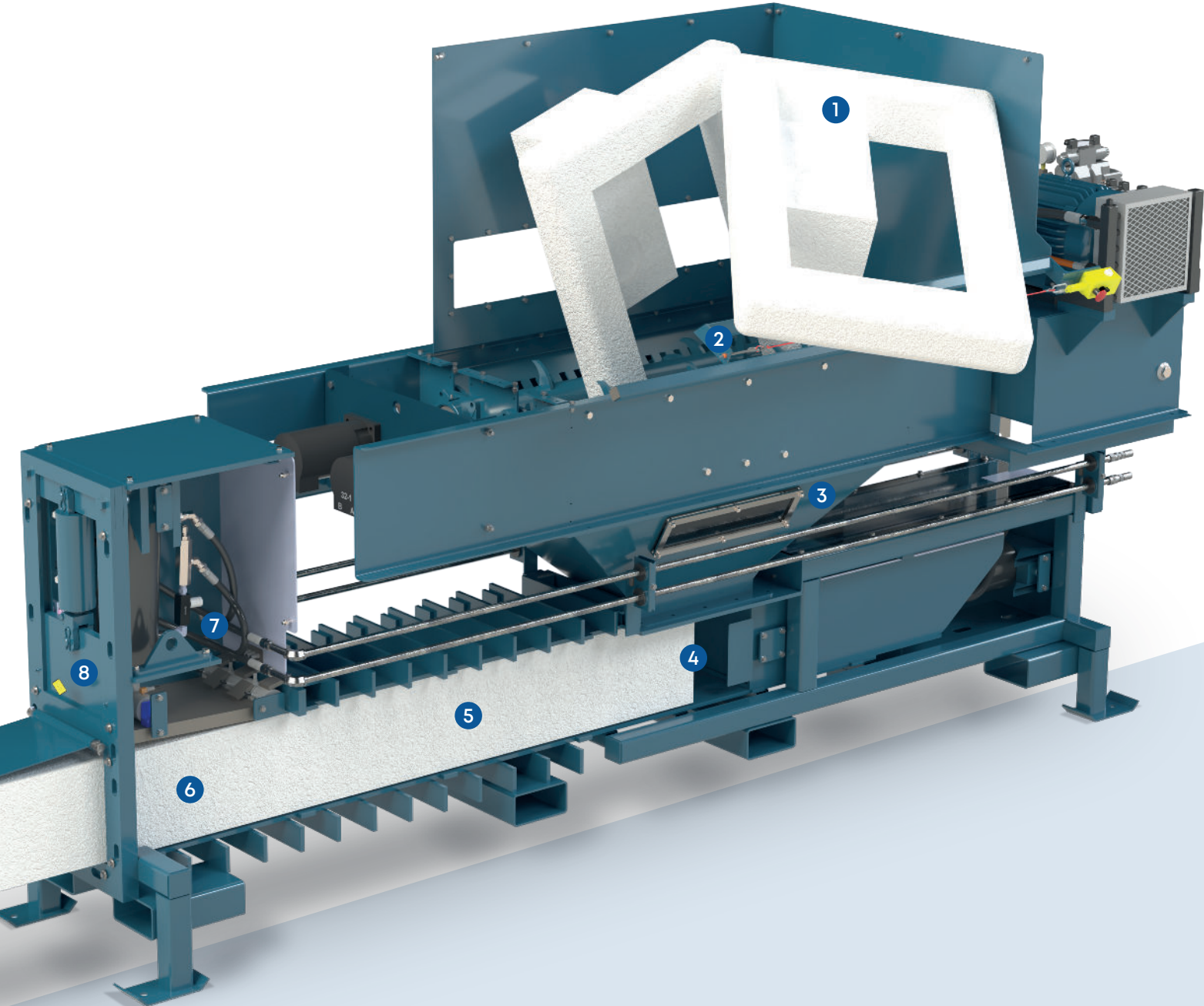
Input material



Output material

“ We’ve dramatically cut back on our waste hauling. That was one of our driving forces to procure this equipment.”

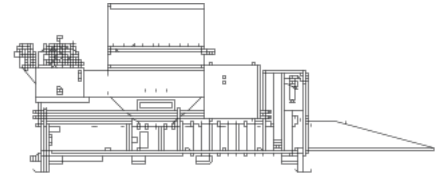
Kurt Kurzawa, Program Manager – Logistics Recycling & Enterprise Waste, Best Buy



# Models

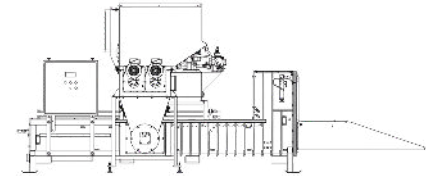
## D10 EPS Densifier

The D10 is a compact, integrated unit designed for lower-volume operations. With its small footprint, built-in power unit, and pre-breaker, it's ideal for retail backrooms, distribution centers, and other facilities with limited space and moderate volume EPS waste. The D10 is available in both right-hand and left-hand feed configurations, offering flexible installation to suit your layout.



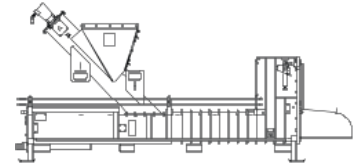
## D20 EPS Densifier

The D20 is designed for high-volume operations that require a smaller footprint and all-in-one functionality. Ideal for facilities needing robust performance without the space demands of larger systems, the D20 combines a compact design with quiet operation—making it well-suited for indoor or noise-sensitive environments. It offers four different loading configurations to fit a variety of layouts and workflows, providing flexibility without sacrificing throughput.



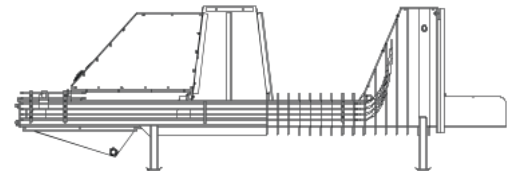
## D30 EPS Densifier

The D30 is a continuous-feed, bulk processing system built for higher-volume operations such as recycling centers and large distribution facilities. It offers customizable integration options like bag houses and pre-crushers to handle large volumes of EPS waste efficiently. Engineered for long-lasting, heavy-duty performance, the D30 delivers reliable operation and consistent output for demanding environments.



## Densifier D120

The D120 is built for high-volume, continuous-feed operations where maximum throughput is essential. Ideal for large-scale recycling facilities and high-output industrial environments, the D120 delivers unmatched capacity and efficiency. Engineered for peak performance and around-the-clock reliability, the D120 sets the industry standard for high-capacity EPS densification.



## Dimensional Data and Specifications

	D10	D20	D30	D120
Chamber volume (cu. feet)	2	2	2	9
Motor (HP)	15	15	15	30
Cylinder (diameter)	(1) 6"	(1) 6"	(1) 6"	(2) 7"
Ram force (PSI)	490	490	490	495
Total force (lbs)	71,000	71,000	71,000	192,000
Feed capacity (lbs/hr)	up to 120	up to 300	up to 300	up to 1,200
Compaction ration	up to 50:1	up to 50:1	up to 50:1	up to 50:1
Output density (lbs/ft)	16 - 22	16 - 22	16 - 22	16 - 22
Base machine weight (lbs)	7,700	8,700	3,700	10,000
Power unit weight (lbs)	N/A	N/A	1,250	1,890
Pre-breaker	Included	Included	Optional	Optional
Baghouse	N/A	N/A	Optional	Optional
Forcefeeder	N/A	Included	Included	Included

While Sebright Products, Inc., strives to make the information provided on processing of your waste or recycling stream, as timely and accurate as possible, the company makes no claims, promises or guarantees about the accuracy, completeness, or adequacy of any of the provided information, and expressly disclaims liability of errors and omissions in the content of the information, or analysis provided to your company. It is solely the responsibility of each recipient of the information Sebright Products, Inc., has provided to satisfy itself as to the accuracy of the information provided by Sebright Products, Inc., and as to the efficacy of the product(s) for the use(s) intended.